

I, MARSHA STILLER, CLERK OF THE CIRCUIT COURT OF MARTIN COUNTY, FLORIDA, HEREBY CERTIFY THAT THIS PLAT WAS FILED FOR RECORD IN PLAT BOOK 12, PAGE 23, MARTIN COUNTY, FLORIDA, PUBLIC RECORDS, THIS \_\_\_\_\_ DAY OF \_\_\_\_\_, 19\_\_\_\_.

MARSHA STILLER,  
CLERK CIRCUIT COURT  
MARTIN COUNTY, FLORIDA.

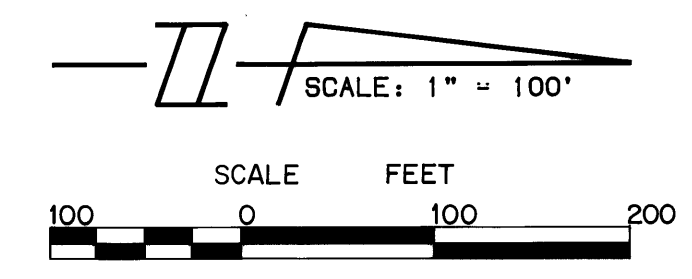
BY: \_\_\_\_\_  
DEPUTY CLERK

FILE NO. \_\_\_\_\_

(CIRCUIT COURT SEAL)

# PLAT NO. 2 COBBLESTONE, P.U.D.

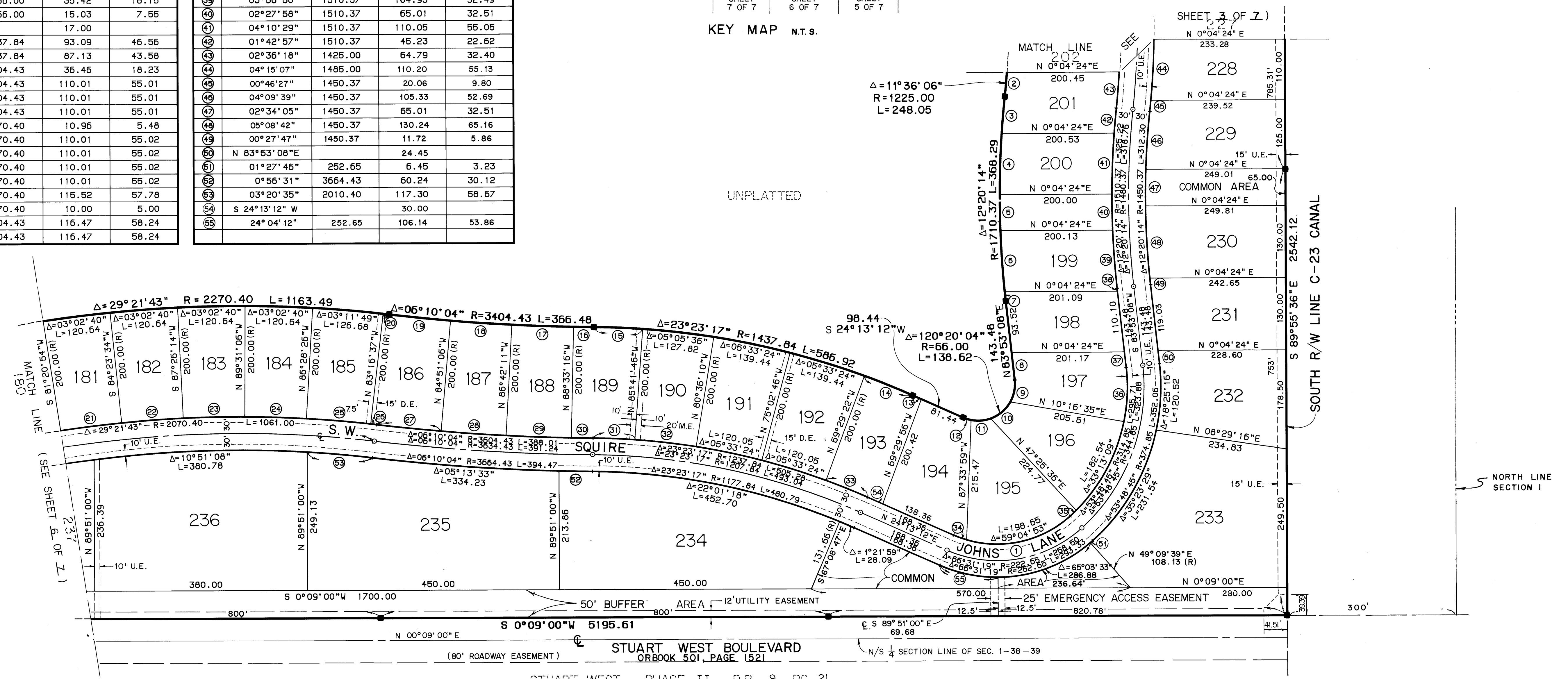
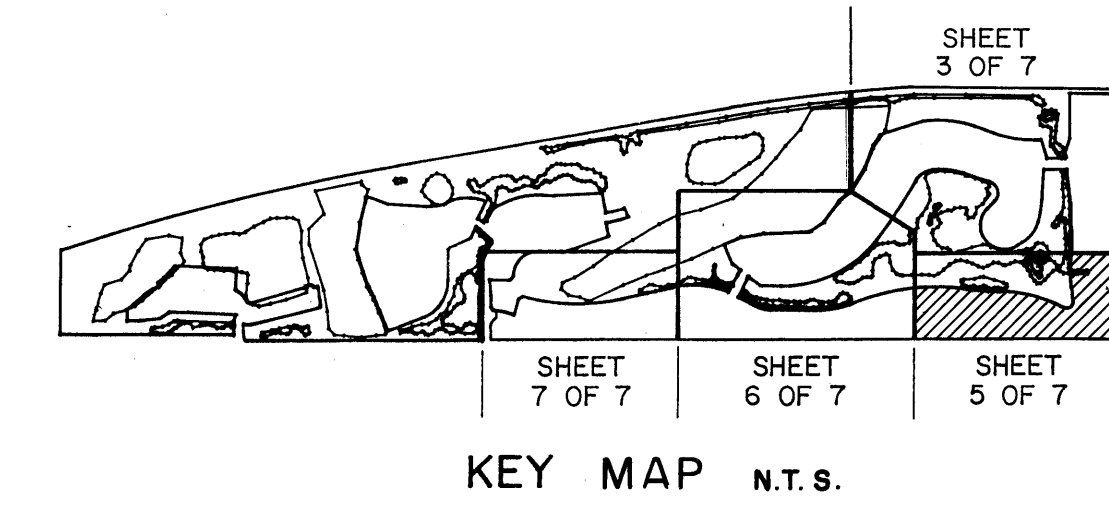
LYING IN SECTIONS 1 & 12, TOWNSHIP 38 SOUTH, RANGE 39 EAST  
MARTIN COUNTY, FLORIDA



MARCH, 1989

DATA				
Δ	DELTA/BEARING	RADIUS	LEN./DIST.	TANGENT
1	66°31'19"	192.65	223.67	126.36
2	02°01'31"	1225.00	43.30	21.65
3	02°14'07"	1710.37	66.73	33.37
4	03°41'08"	1710.37	110.02	55.03
5	02°10'40"	1710.37	65.01	32.51
6	03°41'00"	1710.37	109.95	55.00
7	0°33'19"	1710.37	16.58	8.29
8	N 83°53'08"E		49.96	
9	35°44'47"	66.00	41.18	21.28
10	40°47'16"	66.00	46.99	24.54
11	30°45'03"	66.00	35.42	18.15
12	13°02'58"	66.00	15.03	7.55
13	S 24°13'12"W		17.00	
14	03°42'34"	1437.84	93.09	46.56
15	03°28'19"	1437.84	87.13	43.58
16	0°36'49"	3404.43	36.46	18.23
17	01°51'05"	3404.43	110.01	55.01
18	01°51'05"	3404.43	110.01	55.01
19	01°51'05"	3404.43	110.01	55.01
20	0°16'36"	2270.40	10.96	5.48
21	03°02'40"	2070.40	110.01	55.02
22	03°02'40"	2070.40	110.01	55.02
23	03°02'40"	2070.40	110.01	55.02
24	03°02'40"	2070.40	110.01	55.02
25	03°11'49"	2070.40	115.52	57.78
26	0°16'36"	2070.40	10.00	5.00
27	01°51'05"	3604.43	116.47	58.24
28	01°51'05"	3604.43	116.47	58.24

DATA				
Δ	DELTA/BEARING	RADIUS	LEN./DIST.	TANGENT
29	01°51'05"	3604.43	116.47	58.24
30	0°36'49"	3604.43	36.60	19.30
31	03°28'19"	1237.84	75.01	37.52
32	05°05'36"	1237.84	110.04	55.06
33	03°42'34"	1237.84	80.14	40.08
34	07°26'26"	192.65	25.02	12.53
35	02°43'48"	314.85	15.00	7.50
36	17°51'48"	314.85	98.16	49.48
37	S 83°53'08"W		28.28	
38	S 83°53'08"W		5.10	
39	03°58'50"	1510.37	104.93	52.49
40	02°27'58"	1510.37	65.01	32.51
41	04°10'29"	1510.37	110.05	55.05
42	01°42'57"	1510.37	45.23	22.62
43	02°36'18"	1425.00	64.79	32.40
44	04°15'07"	1485.00	110.20	55.13
45	00°46'27"	1450.37	20.06	9.80
46	04°09'39"	1450.37	105.33	52.69
47	02°34'05"	1450.37	65.01	32.51
48	05°08'42"	1450.37	130.24	65.16
49	00°27'47"	1450.37	11.72	5.86
50	N 83°53'08"E		24.45	
51	01°27'46"	252.65	6.45	3.23
52	0°56'31"	3664.43	60.24	30.12
53	03°20'35"	2010.40	117.30	58.67
54	S 24°13'12"W		30.00	
55	24°04'12"	252.65	106.14	53.86



STUART WEST - PHASE II, P.B. 9, PG. 21

**SURVEYOR'S NOTES**

- (R) - DENOTES RADIAL LINE
  - - DENOTES P.C.P. (PERMANENT CONTROL POINT) # 959
  - - DENOTES P.R.M. (PERMANENT REFERENCE MONUMENT) FOUND # 959
  - - DENOTES P.R.M. (PERMANENT REFERENCE MONUMENT) SET # 959
  - D.E. - DENOTES DRAINAGE EASEMENT
  - U.E. - DENOTES UTILITY EASEMENT
- THERE SHALL BE NO BUILDING OR ANY OTHER KIND OF CONSTRUCTION OR TREES OR SHRUBS PLACED ON DRAINAGE EASEMENTS.
- THERE SHALL BE NO BUILDING OR OTHER PERMANENT STRUCTURES PLACED ON UTILITY EASEMENTS.

BEARING BASE: THE EAST LINE OF THE SOUTHWEST QUARTER OF SECTION 12 IS ASSUMED TO BEAR N 00°19'48"W AND ALL BEARINGS SHOWN HEREON ARE RELATIVE THERETO.

LINDAHL, BROWNING, FERRARI & HELLSTROM, INC. CONSULTING ENGINEERS, PLANNERS & SURVEYORS		<b>5</b>	<b>7</b>
P.O. BOX 727 JUPITER, FLORIDA 33468	10 CENTRAL PARKWAY SUITE 400 STUART, FLORIDA 34994		
1905 SOUTH 25TH STREET SUITE 205 FORT PIERCE, FLORIDA 34947	2065 15TH AVENUE VENO BEACH, FLORIDA 32960	PLOT PLAT NO. SHEET 4 OF 7 - 311 (220) PP: 86196 1617 20-Feb-89 16:10 / 86-196-1	